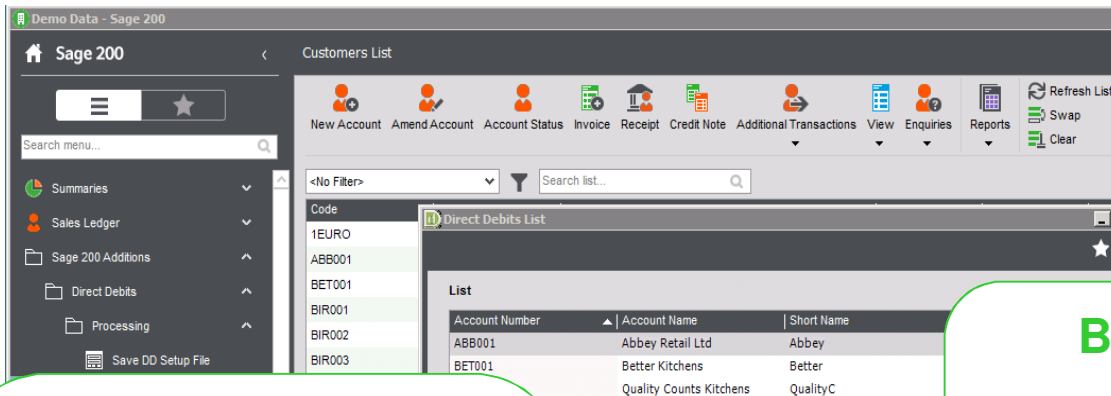


Think Sage Add-ons. Think Solutions.

Direct Debit Module – Sage 200

Our Sage 200 Direct Debit Module provides an ideal solution if you already collect payments by Direct Debit but you manually process entries in Sage.

The Sage 200 Direct Debit Module* enables you to generate a suggested Direct Debit collection list directly from your Sage 200 invoice data. Once 'posted' it produces a Bacs request file (in your Bacs provider's specific format) and at the same time automatically generates credits and allocates the receipts saving hours and sometimes days in processing time. If you collect the same amount on a regular basis then our optional Receipts Schedule enables you to pre-set values in advance. Payments can be offset against a specific invoice or left as a 'payment on account'.



Payments
List

Features

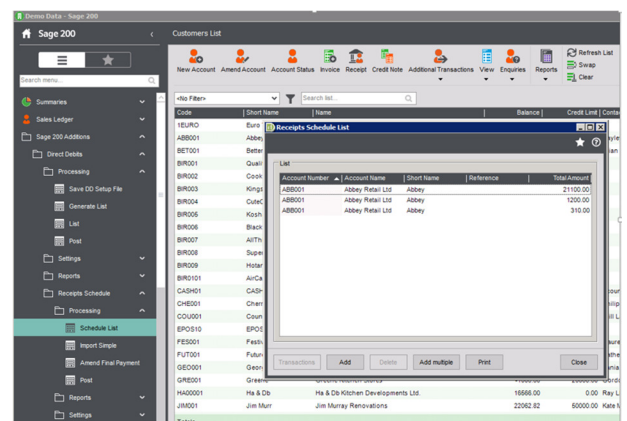
- ✓ Stores customer bank details against their record in Sage.
- ✓ Collect either individual invoices or balances on a customer's account.
- ✓ Create Direct Debit schedules to collect one invoice over multiple dates.
- ✓ XML Output for Euro Payments (SEPA).
- ✓ Specify the collection date to allow for future Direct Debit collection.

*Note:
Also requires Bacs approved software.

Benefits

- ✓ Improves cash flow.
- ✓ Greater control of payment dates.
- ✓ Reduces the level of manual inputting.
- ✓ Avoids manual errors.

Schedule List



Contact us

For more information about our **Solutions Additions** range or to arrange a demonstration contact:

Kathy Warner – Partner Programme Coordinator
kathyw@solutionsadditions.co.uk
Tel 0115 840 5075

T 0115 840 5075
E enquiries@solutionsforaccounting.co.uk
W www.solutionsforaccounting.co.uk

Solutions for Accounting | Sherwood House | 7 Gregory Boulevard | Nottingham | NG7 6LB
Offices Nationwide

Registered Office: Solutions for Accounting Limited, Sherwood House, 7 Gregory Boulevard, Nottingham, NG7 6LB. Registered in England No. 3501282 Vat no 705952037